

Newsletter

ANGLESEY ANTIQUARIAN SOCIETY AND FIELD CLUB

No. 46 Gwanwyn / Spring 2006

THIRD TRIUMPHANT DAY SCHOOL!

Saturday 11th February was another memorable day when under the organisation of Ann Benwell, Hen Goleg, University of Wales, Bangor was the venue for a stimulating programme.

Two years ago the theme of communication was the sea. On this occasion it moved to the land, the title being 'Communications in Anglesey- revealing conduits for social change.' Frances Lynch introduced the speakers and chaired the day's proceedings. Of late, single meetings and some excursions have sometimes been sparsely attended but this method of presentation has proved to be immensely popular. There was a full attendance of seventy members and it was heavily over subscribed, disappointing many others. It could be one of the answers to the problem of falling attendances and membership numbers, except it would place too great a burden on our irreplaceable Ann Benwell! It has to be another two years before we can experience a repeat. There were no major mishaps. Our first speaker, only five minutes late, had travelled all the way from Leeds so Ann had to start the proceedings with what was supposed to be the second lecture. The absence of blackout curtains on the windows caused some disquiet and we were all conscious of the lack of time for such a huge subject. It seems one or two speakers may return to our other meetings to enlarge on the wealth of material they were unable to complete. Once again the catering was excellent. We all left, replete with good food, company and knowledge!



Ann Benwell and Frances Lynch

Continued on Page 2

Edrych yn Ôl.../ Looking Back...

Seventy Five Years Ago

Accounts in the Transactions covering 1931 reveal membership numbers fell from 258 to 242.

At the Annual General meeting an expression of thanks was received from the Cambrian Archaeological Association for lunch provided the previous September. On 9th May Lord Boston was in the Chair when Mr W. Aspden delivered an address illustrated by lantern slides; 'The Sea Bird Colonies of Anglesey.'

At the General Meeting on 3rd October Mr P.K. Baillie Reynolds, F.S.A. gave an illustrated lecture on 'The Romans in North Wales.'

Three excursions were arranged. The first, a visit to Parys Mountain was abandoned owing to the indisposition of Mr. T. Clegg. The other two were led expertly by Mr Harold Hughes, F.S.A. They were well attended and the weather was favourable. On June 13th the visits were to Llanbabo Church, Llanol and Llanfechell Church. An extra bonus similar to one of our recent excursions was a visit to Brynddu by kind permission of Lady Hughes-Hunter who was present. Mr Hugh Owen, M.A., F.S.A. gave a brief account of its history. At that time this was of special significance as the 1931 Transactions published the diary of William Buckley. On July 11th there were visits to Llanfaglan Church, Llansadwrn Church and Dinas Dinlle. Members were entertained to tea at Dinas Dinlle by Mrs Schwabe.

The Anglesey Excavation Fund report revealed the moving of two carved stones from the exterior of Penmon Church to the interior and partial excavations of the chambered mound *Bryn yr Hen Bobl* were carried out by Mr. Hemp and Major Cunningham.

Twenty Five Years Ago

In 1981 membership stood at 1,081. On May 9th the Annual General Meeting was held in Beaumaris Town Hall.

Dr. A.D. Carr gave an address on 'Mediaeval Beaumaris.'

After tea, Beaumaris Castle was visited under the guidance of Dr. Carr. The Autumn meeting on 7th November at Llangefni Town Hall welcomed the guest speaker Dr. Denis W. Wood who lectured on 'The World-Wide Significance of the Geology of Anglesey.'

Mrs. Sian White, wyres i Syr Ifor, oedd y darlithydd ar Tachwedd 13 (Darlith Goffa Syr Ifor Williams) yn Ysgol Newydd y Gaerwen. Y testun oedd 'Darganfyddiadau Archaeolegol Cefn Eithin.'

The Annual Dinner was at Henllys Hall on 4th April when Mr. Bryn Parry deputised for Lord Cledwyn of Penrhos, unable to attend because of illness.

There were four local excursions. On 30th May visits were made to Rhuddlas Castle and Bodrhyddan Hall, led by Lord Langford. St Asaph Cathedral was viewed before tea at Rhyll. On 13th June the tour was at Lligwy, Mr. G.T. Jones dealing with the natural history of the beach and Mr. Richard White speaking at Din Lligwy. Dr. Christopher Smith guided members at Castell Bryngwyn on 5th September while Mr. N.G. Astley demonstrated Llanidan Old Church. The week-end excursion 21-23rd August was to Cardiff. Tours included the National Museum, Welsh Folk Museum, Caerleon and Llandaff Cathedral.

The Summer also boasted two extra meetings arranged by Mr. Richard White- an Open Day at Capel Eithin, Gaerwen on 24th July and a visit to the headquarters of the Gwynedd Archaeological Trust and Bangor Museum on 10th October.

Gift Aid

Please help our Society to gain maximum advantage when you renew your subscriptions.

Under the Gift Aid Scheme the Society is able to reclaim from the Inland Revenue £1.68 for every single subscription and £2.52 for every joint subscription paid each year by members who can confirm that they pay either Income Tax or Capital Gains Tax. Only 150 members (26% of total membership) have so far taken advantage of this scheme. If a Gift Declaration form is enclosed with your Newsletter do please complete it and return it to the Treasurer so that he can reclaim 28% of your subscription from the Inland Revenue.

Day School: Communications in Anglesey 2006

Using maps to discover Ancient Routes in Anglesey.



Mike Blackburn from the Ordnance Survey gave us an account of the accuracy of early 6 inch maps produced by 'Sappers' and engraved on copper. These revealed earlier centres and landmarks such as fords. Many of these were hundreds of years old and reflected the position of possible Roman routes. The annual system of recording landscape alterations reflects social change and is a continuing process. He showed us interesting landscapes and we inspected large scale maps.

Place-name analysis in Roman road research in Anglesey.



Ann Benwell emphasised the enormous significance of Welsh place names reflecting the origin of features such as farms, fields and pathways. Databases are now showing patterns and she gave examples. Possible Roman routes

could appear under the name 'Stryd'-road or pathway; 'Sarn'-a causeway. 'Heol' could be a highway and 'Palma' a pavement. The many versions of *Elen*, *Eilian*, *Eliau*, *Halen* or *Heilyn* could be connected to *Elen*, legendary wife of *Macsen Wledig*, Magnus Maximus, Emperor of the West.

The Menai Ferries.



David Longley used lovely photographs to show the locations of the six or so ferry crossings of the Straits. Some had altered according to shifting sands- particularly the northerly ones near Beaumaris. Llanfaes, the Green and Gallows Point were several landing spots for connection to

Lafarn Sands. Garth, Porthaethwy, Llanidan (Moel y Don), Talyfoel and the earliest, Abermenai were the others, the most important being Porthaethwy from Cambria, the Ferry House. Tal y Foel connected Caernarfon. The remains of slipways and piers featured in his illustrations.

The Post Roads of Anglesey.



John Cowell, with his unequalled knowledge of the Post Office, outlined the relatively short history of our post roads. It commenced in 1635 with 'Post-boys,' the Pony Express of that day, later changing to Mail Coaches. Owing to highwaymen they had to carry armed guards.

Beaumaris was the first point, later shifting to Porthaethwy. The 1801 Act of Union increased its importance. Two London coaches crossed Anglesey daily and records showed their timing was extremely accurate. The terminus was the Eagle and Child at Holyhead with a main stop at the Post Office/Inn at Gwyndy. The state of the roads was poor and eventually Parliament engaged Telford to create the new route by-passing Penmynydd and Llangefni. With the Suspension Bridge and the Stanley Embankment there was a significant shortening of the journey time. A new Inn at Mona was built but that was doomed to a short life with the arrival of rail transport. The roads were again neglected for a while but in the early 20th century the rise of motor transport produced another renaissance.

The Sea Fords of Anglesey.



Gwilym T. Jones gave an illustrated view of the fords, some of which were mixed fords and ferries, depending on their site and the state of the tides. The main ones were at Malltraeth and the crossing to Holy Island. In passing he mentioned

Dulas Bay and Red Wharf Bay. There were ten separate crossing points at Malltraeth, probably classified also as river fords. In their heyday guides had to be hired but there were interesting landmarks, rocks or markers with names such as 'White Lady.' There was also a set of stepping stones across the original path of the Cefni. There were nine crossing points to Holy Island, from the northerly Penial to Beddmanarch to the southerly Rhyd y Gari near Cymyran- 'The Meeting of the Waters.' The earlier Old Post Road crossing was at Pen y Bont,

just north of the bridge- conservative folk preferred the ford to the tolled bridge when it was built! The Pen y Groes to Beddmanarch route preceded the construction of the Stanley Embankment. Slightly south was another path that passed the New Inn at Valley. We hope Gwilym can enlarge on these at a later date!

Roman Roads Project in Anglesey

Dave Hopewell of the Gwynedd Archaeological Trust spoke of his search for Roman roads on our island. He explained his modern methods using computer digital systems to record probable, predicted and discontinued old routes.



Excavations were aimed at revealing the typical construction of a Roman road- two ditches and a raised bank or agger, metalled with mixed gravel and clay. He showed pictures of several mainland sites but none have been discovered on Anglesey.

The Railways of Anglesey.

Larry Davies produced a wonderful set of nostalgic pictures of the three main railways of the island, with systematic views of all the stations and sheds. He did not forget the famous 'Irish Mail,' the oldest named train which also carried the accurate time in G.M.T., long before



the days of radio signals. From 1845 to the present day we viewed the rise and fall of the routes, the Britannia Bridge's burning and reconstruction, the short lived Pentraeth branch from 1909 until 1930 when like the Amlwch line, 1866 to 1952, it lost its passenger carrying status before final closure. Through several different companies, nationalisation and back to private enterprise, the future is still uncertain.

The Holyhead Breakwater Tramway.

Andrew Davidson gave a refreshing view of the development of Holyhead Outer Harbour using little known illustrations. The Tramway was wide gauge and extended along the Breakwater from the Mountain Quarry, with a branch line along Newry to Salt Island. We saw how plans



were altered and more recently how parallel lines of stone sleepers of track had been uncovered. The special rolling stock and locomotives were featured. The elaborate houses built by the designers and contractors were once a pleasing aspect of the landscape. It is a good subject for an excursion.

The Drovers of Anglesey and their Roads.

The Reverend Emlyn Richards revitalised us all at the end of the day. With great humour and without visual aids he had us all laughing through his talk. Admiring a lady in Essex who, aided by a sympathetic council, was devoted to saving paths and lanes, he described her signs of such lost routes-



grassed channels about 20-30 yards wide and linking with present main roads. He emphasised the skill of the drover, herding cattle not so fast that they would arrive thin and exhausted and not too slow to miss the market. In Anglesey place names again reveal the locations of drover's ways. *Nant y Frân* near Llanbadrig linked to *Buarth y Foel*. Amlwch was a main gathering centre. There was a Drovers' Arms near *Buarthfa* and facilities for applying 'Cattle shoes' for the journey. Rest areas would have existed at Porthaethwy as herding them to swim the Straits would have required preparation and timing. *Buarth Cerrig* may have been the site. Across the straits the main route was through the Nant Ffrancon pass. At 'Ty Glas' near Ogwen, north of the A5, there are the ruins of a 150 square yard enclosure. Another route touched on was across to Abergwyngregin. The constraints of time prevented further discussion and it proved a fitting end to a great day. Frances Lynch summed up and declared the School to be a success.

MEETINGS / CYFARFODAU

Medi / September 2005

The first meeting of the new season at Stone Science saw a loyal group attending a lecture by Spencer Smith.

His return was most welcome when he presented his research and theories on Sycharth, close to the Welsh border just west of Oswestry.

It is the site of the Llys or Court of Owain Glyndŵr and was a fortress and palace in earlier times. A graphic description is provided by a poem of Iolo Goch. Today there is a group of farm buildings close to the motte and bailey, with two fish ponds beyond. In the 1960s, Douglas Haigh excavated the site or more precisely, two small spots on its boundary, together with a quadrant of the motte. His findings could not be matched to Iolo's description. Within the motte he uncovered the foundations of two buildings, one large and the other small. The large one had older post holes and is probably the main hall. From analyses of the soil within the small one, where high phosphate levels were detected, it is probably the garderobe. There were signs of burning, fitting the 1403 account of the sacking of the building by the Black Prince, described in a letter he sent to his father from the site.

More recently, coupled with a TV programme, Stephen has had the opportunity of further examination of the site. With limited excavations, aerial photography and geophysical survey of the surrounding areas he has identified an area of a large garden at the approach to the 'Front door.' To the rear there were signs of industrial buildings and peasant dwellings, a mill and a saw mill from the last century. This seemed to be in keeping with Iolo Goch's portrayal.

The area is a promising choice for a future excursion.

The Editor

Darlith Syr Ifor Williams

"Arglwydd Cledwyn o Benrhos"

Oriel Ynys Môn, Hydref 14, 2005

Crynodeb o anerchiad penigamp gan Emyr Price :

Cyn cychwyn ei ddarlith, dymunodd Emyr Price wellha buan i'r Athro Tony Carr.

Daeth 23 o bobl i wrando ar y ddarlith hon, sef ffigwr isel a siomedig iawn o gysidro statws y darlithydd. Cynhelir y ddarlith hon trwy gyfrwng y Gymraeg sydd, wrth reswm, yn cwtogi ar y nifer o aelodau o'r Gymdeithas sy'n mynychu. Er hyn, mae'r nifer isel o bobl sydd yn mynychu'r cyfarfodydd yn parhau i fod yn is na'r blynyddoedd a fu roedd y ddarlith hon yn barhad i'r ddarlith a roddodd Emyr Price yng Ngwyl Caergybi y llynedd a gogwydd y ddarlith y tro hwn oedd gyrfa Arglwydd Cledwyn fel cenedlaetholwr a gwladgarwr. Yn 1937 fe ystyriodd Arglwydd Cledwyn ymuno â Phlaid Cymru ac roedd yn ddyn ifanc yn chwilio am ei le mewn gwleidyddiaeth pan oedd ar fin gadael Aberystwyth. Ond, erbyn iddo ddychwelyd i Gaergybi yn 1938 fe ymunodd â'r Blaid Lafur, yn bennaf oherwydd effaith y dirwasgiad. Fe ymgeisiodd yn ofer fel Aelod Seneddol am y tro cyntaf yn 1945 yn erbyn Megan Lloyd George gan ddangos ei Gymreictod. Ar ei dryddydd cynnig yn 1951 fe gurodd Megan Lloyd George gan ddod yn Aelod Seneddol gan ymgyrchu yn syth bin am fesurau Cymreig yn y Ty Cyffredin drwy gydol yr 1950au.

Yn 1966 daeth Arglwydd Cledwyn yn Ysgrifennydd Cymru ac ymgyrchodd o 1967 am Ddeddf Iaith i Gymru a gwelliant i'r economi a chodi tai cyngor. Ymgyrchodd dros gael tir cenedlaethol i Gymru a phrynu'r Wyddfa. Yma ym Môn, sicrhodd ddyfodiad Wylfa ac Alwminiwm Môn – y rhain i gyd erbyn diwedd yr 1960au.

Wedi hyn, bu George Thomas yn gyfrifol am ddinistrio llawer o'r gwaith yma gan achosi i Arglwydd Cledwyn golli rheolaeth ar y Swyddfa Gymreig.

Yn 1974 collodd Arglwydd Cledwyn ei le fel Llefarydd yr i

wrthblaid yn bennaf oherwydd iddo fod o blaid yr EEC ac ni chafodd le yn llywodraeth nesaf Harold Wilson. Ond, fe ddaeth yn ôl wedi 1976 drwy ddwylo Callaghan fel Cadeirydd y Blaid Seneddol. Wedi hyn cafwyd y refferendwm datganoli ond methu fu'r ymdrech lew gan Arglwydd Cledwyn i dynnu llywodraeth y Blaid Lafur at ei gilydd yn hyn o beth erbyn 1979. Ergyd drom i Arglwydd Cledwyn oedd buddugoliaeth Keith Best ym Môn yn 1979. Ar y pryd, ymddengys bod ei yrfa ar ben i bob pwrpas. Serch hyn, ar ddechrau'r 1980au, daeth yn Arweinydd yr Wrthblaid yn Nhy'r Arglwyddi gan arwain yn erbyn polisïau Thatcher drwy'r 1980au.

Fe ymddeolodd yn 1992 ond nid cyn iddo fod yn rhan o'r ymdrech i sefydlu Cynulliad i Gymru a cheisio am Ddeddf Iaith newydd i Gymru. Roedd Arglwydd Cledwyn yn bensaer ar gyfer lawer o bethau y mae llywodraeth heddiw yn eu datblygu, yn Lloegr ac yng Nghymru. Chwaraeodd ran flaenllaw ym modolaeth S4C gan lwyddo i newid meddwl Willie Whitelaw pan oedd hwnnw'n siarad yn erbyn sefydlu'r sianel.

The above is a report by Alun Gruffydd on the Memorial Welsh Lecture by Emyr Price. It is a continuation of the English lecture on Lord Cledwyn of Penrhos given at the Ucheldre centre last year. This focussed more on Lord Cledwyn's status as a nationalist and patriot. He retired in 1992 but not before he played a part in the efforts to secure an Assembly and a Welsh Language Act for Wales.

Hydref / Autumn Meeting 2005

For what is normally the main Meeting at Oriel Ynys Môn on 29th October there was only a moderate attendance.

Mr Geraint Evans took the Chair and welcomed our guest speaker.

The lecture, entitled 'Observations on the History of County Administration in Anglesey' given by Dr W.P. Griffith was a foretaste of what it is to come in the definitive history to be published early in 2006.

Dr Griffith did not reveal his conclusions but outlined his intentions, the sources of his information and the span of time involved.

1889 was the year of the formation of the Council and his aim was to work forwards and backwards from that time. Forward from then he chose the onset of the First World War as an end-date. Prior to 1889 the major administration was in the hands of the law, so he relied on going back through records of quarter sessions and magistrates to 1780. He wanted to take this as an opportunity to look at Wales as a whole; what was distinctive about local administration and what was similar compared to England. In doing this he did not wish to produce a mere catalogue of events, rather a narrative of how Anglesey was governed. He aimed to establish a story, from the social aspect and later the political circumstances. An English view by Webb gave a mixed bag of abysmal impressions from quarter sessions and magistrates records, yet in all fairness the result was reasonably efficient with many examples of sympathetic government. Dr Griffith would not reveal how Anglesey stood except that the records were mostly middle ground, some good, some awful!

Other sources were Records from the County Gaol, the Union Guardians, newspapers and pamphlets. Welsh language material covering south west Anglesey was at Caernarfon. Much more information from wider sources was dredged out from the last four decades of the period observed.

The venture is vast and has resulted in a tome of 150,000 words in nineteen chapters. It promises to be a landmark in the series of histories of our Island.

The Editor

Tachwedd/November Meeting 2005.

On a clear, frosty night there was a good turn out by a group of old faithfuls with the welcome addition of younger blood.

November 18th was the occasion Dave Wilson combined his role of host at Stone Science with that of lecturer. His subject was, 'The Census.' Earlier in his career Dave did a great deal of research into the Census but for various reasons he had to

abandon his project. More recently he has resumed the work and has been extremely busy with the Anglesey Census Returns. The fruits of his labours are two CD ROMS currently available for the years 1891 and 1871. At this time 1861 is in an advanced state of preparation. Our host outlined the history of the process of numbering populations, going back thousands of years. Perhaps the most notable was the Roman census which took Joseph and Mary to Bethlehem. Other countries managed to introduce the exercise earlier than the United Kingdom- the USA had their first in 1790. There was a good deal of opposition. The people were fearful that it would bring on a plague. There was much discussion from 1800 until Parliament authorised the process finally. The nature of questions asked changed over the years. In 1891 the number of rooms in the house was requested; in 1921 place of work and in 1951 amenities (outside lavatories etc.) received attention. Earlier returns were carried out by armies of enumerators, gradually changing to self-completion forms. As for counting, punched cards were introduced in 1911 and computers took over from 1961. There were many amusing entries, probably arising out of exasperation. One lady head of household entered her occupation as 'Mangle worker' and her husband entered 'Turner of handle of mangle.' We were shown Queen Victoria's record at Osborne House- no-one was exempt from the process. Those born at sea were entered as 'Seaborn,' giving rise to the use of the term as part of a surname. Dave's talk was amusing and informative and we can look forward to viewing his local census returns. For all who are interested they will be available at all local libraries or for purchase at Stone Science.

The Editor

Ionawr / January Meeting 2006

The night of January 20th was the first lecture of the year at Stone Science.

It was a 'Full house' under the chairmanship of Mr. Geraint Evans. Mrs. Ann Benwell also gave an introduction to the first of the talks on communications in Anglesey, before the Day School next month. Mr. Gwilym T. Jones, with great success, proceeded to convey his enthusiasm for Thomas Telford, a great engineer and human being. The talk was entitled, 'Thomas Telford and North Wales.' He reviewed his life and many achievements in other parts of the United Kingdom and abroad, before touching on North Wales and the climax of his elegant Menai Suspension Bridge. Telford the man came over as a delightful personality, humane and easy to approach, with the welfare of his workers foremost in his mind. A self-educated son of a shepherd, born in 1757 in Eskdale he became an apprentice stone-mason. His first work was the sad task of carving his father's headstone. On moving to London he made a rapid advance employed on the construction of Somerset House. He was then Surveyor of Public Works in Shropshire. His reputation as road and canal constructor enabled him to serve the King of Sweden on the Göta Canal. The elaborate linking of lochs in Scotland, joining the North Sea to the Celtic Sea was another of his feats. He worked on the harbour at Aberdeen and the St Katherine Docks in London. In Wales he was responsible for many roads including the A5. His attention to detail was legendary, even to the design of the milestones. The Froncysyllte Aqueduct and its canal is a masterpiece. All his bridges are elegant- the Llyn Ogwen Bridge, the Waterloo Bridge at Betws y Coed and the Menai Suspension Bridge. Gwilym pointed out that the latter was not the first bridge across the Straits. There is a record of a pontoon bridge in 1282, when Edward I moved in! Reginald Allard linked the sides somewhere in the region of Glyngarth. Telford's bridge piers were constructed of local limestone. Baltic timber and wrought iron were other materials used. It cost £231,000 and was opened in 1826 with a dinner at the George Hotel followed by a ball at the Castle Hotel in Bangor. Our evening

was equally memorable. Gwilym's talk was a fitting pot-boiler to the February Day School.

The Editor.

Chwefror / February Meeting 2006 **ARCHAEOLOGICAL EXCAVATIONS AT PARC** **CEGIN, LLANDYGAI**

'The most important Prehistoric Dig in 2005-probably!'

With Geraint in the chair, at Stone Science on 17th February Dr. Jane Kenney gave a lucid account and explanation of the recent dig.

Before the adjacent industrial estate was built it was excavated in 1967, revealing two Neolithic henges of different dates, showing it to be an important ritual site. The present location is due for development so it was decided to do a complete stripping. As with most sites evidence of activity through different ages was uncovered. Many pits, some with glass beads and broken shards of Roman pottery were found. Some pits contained charcoal but there was no general evidence of occupation, supporting the theory of it being a ritual site. Close by were marks of a late bronze age roundhouse or circular outhouse. The climax of the lecture was pictures of a rectangular set of post holes and evidence of connecting narrow pits which may have held vertical planking. The whole pattern was that of a known type of rectangular partitioned Neolithic long-house or possible ritual building- there was no evidence of a hearth. Dating was about 2800-2400BC. It corresponded to others at rare sites- four in Wales and at Ballyglass in County Mayo. It was a stimulating evening.

The Editor

Mawrth / Pot Pourri / March 2006

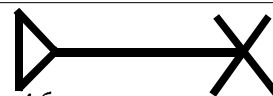
At the Oriel on 10th March, Geraint introduced three speakers to an appreciative audience.

Margaret Hughes held us with a talk on 19th Century Welsh emigration to Manchester. It was on a large scale owing to the perennial problem of local unemployment. It brought great benefit to the city- Owen of Holywell founded 'Owen's College,' Manchester University. Up to the 2nd World War there was a thriving Welsh speaking community, with Chapels, Eisteddfodau and all manner of social gatherings. She named many other distinguished natives of Anglesey.

Gwilym Jones followed with a delightful slide show of old Cemaes Bay. The source was the skilled photography of a local shopkeeper, O.R. Morris. We saw evocative views of the old village together with personalities such as Lloyd George. This enterprising man had converted some into postcards which he retailed to visitors during the height of postcard popularity at the start of the 20th Century. In doing so he left us an irreplaceable legacy of illustrations of life at that time.

We closed with a stunning modern Powerpoint presentation of photographs of every kind of occupation on the island. It was given by Eric Lander and by coincidence had been prepared for a Manchester historical group showing them how we lived.

The Editor



Telford's Signature

When examining Telford's numerous building efforts- more notably his earlier projects, search for this sign. It is his personal stone-mason's mark.

Next Oriel Ynys Môn Exhibition

April 29th – August 28th 'Welsh Costume.'

IDRIS DAVIES, O.B.E., J.P.

Members will be sorry to hear that Idris Davies, a Life-Vice-President of the Society, passed away on 24th November, 2005. He served as the Chairman of the Anglesey Antiquarian Society's Committee for many years and a tribute to his devoted service will appear in the 2006 Transactions. Our sincere sympathy is extended to his wife, Madge and to all members of his family.



Excursions / Gwibdeithiau

2005 - 2006



Mr. Gwilym T. Jones

Saturday 3rd September

Thirty two members and friends gathered at Malltraeth car park on a fine afternoon for the last excursion of the 2005 season. We were led by Mr Gwilym T Jones to various locations on the cob where he described the work done to drain the marsh and to control Afon Cefni, identifying the

locations of some crossing places before this work was done. He also explained the meaning of local place names and their relevance to some of the routes across the marsh.

Sadwrn 3 Medi

Daeth 32 o aelodau a ffrindiau at ei gilydd yn maes parcio Malltraeth ar brynhawn braf i gymeryd rhan yn gwibdaith olaf tymor 2005. Cawsom ein arwain gan Mr Gwilym T Jones i wahanol safleoedd ar y cob i esbonio y gwaith wnaed i sychu y gors a rheoli Afon Cefni ac i leoli ble yr oedd yn bosib croesi'r gors cyn y gwaith hynny. Hefyd fe eglurodd priodoldeb enwau lleol a rhai o'r rhydiau ar draws y gors.



Ar y Cob

Gareth Parry

Looking Ahead.../ Edrych Ymlaen

Please note this information down in your diary or on your Calendar

Thursday 26th May 2006 at 6.30 pm

EVENING EXCURSION

Llangadwaladr Church

On our first visit we meet at 6.30 PM at Llangadwaladr Church, by kind permission of the Reverend Ariadne van de Hof. Our last visit there was in 1965 since when the church has undergone significant restoration. We will see the results of this work and learn about some the problems and successes during its progress. The church is signposted off the A4080 road in Llangadwaladr village some 200 yards west of the junction with the road to Bethel. Its Grid Reference is 3838/6925. To assist with parking arrangements please advise the organiser of your intention to attend.

Organiser: Gareth Parry Tel: 01248 722697

Nôs Iau Mai 2006 am 6.30 o'r gloch

GWIBDAETH GYDA'R NÔS

Eglwys Llangadwaladr

Bydd y cyntaf min nôs Iau, 25 Mai pan fyddwn yn ymweld a Eglwys Llangadwaladr, drwy caniatad y Parchedig Ariadne van den Hof. Yn 1965 y bu y gymdeithas yno o'r blaen ag mae'r eglwys wedi cael atgywiriadau sylweddol yn y cyfamser. Cawn weld canlyniadau y gwaith a clywed dipyn am rai o'r problemau a llwyddianau drwy'r datblygiad. Mae'r eglwys wedi ei arwyddo oddiar y ffordd A5080 ym mhentref Llangadwaladr rhyw 200 llath i'r Dde o'r cyffordd a ffordd Bethel. Y Cyfeiriad Grid yw 3838/6925. Er mwyn hwylysu trefniadau parcio gadewch i'r trefnwr wybod os ydych yn bwriadu dôd, os gwelwch yn dda. Trefnwr: Gareth Parry Ffôn:01248 722697

Saturday 17th June 2006 at 11 am

DAY EXCURSION

Llanbadrig's Church and Cemaes

Our walk will be led by Mrs Frances Llewellyn and Mr Gwilym Jones of the Cemaes Historical Society. We will meet at Llanbadrig Church at 11.00 am.(Grid Reference 376946). "AAS" SIGNS WILL POINT THE WAY FROM THE A5025 EAST OF CEMAES. We will visit the church before proceeding to 'Moreia' Chapel, Llanlleiana and Din Gynfor. We will then visit Cemaes Village Hall to view an exhibition prepared by the local Historical Society depicting aspects of the area's history. We end the day with a meal at the Douglas Hotel, Tregele. The detailed route and timings have not been finalised but will be provided in good time for those returning the booking forms which will be included with the AGM papers. The cost will be £13.50 per person.

Organiser: Gareth Parry Tel: 01248 722697

Dydd Sadwrn 17 Mehefin 2006 am 11 o'r gloch

GWIBDAETH Y DYDD

Eglwys Llanbadrig a Cemaes

Bydd ein cerddeddiad eleni yn ardal Llanbadrig prynhawn Sadwrn, 17 Mehefin o dan aewiniad Mrs Frances Llewellyn a Mr Gwilym Jones. Byddwn yn cyfarfod ger eglwys Llanbadrig am 11 o'r gloch. Awn i ymweld a'r eglwys cyn mynd ymlaen i gapel 'Moreia,' Llanlleiana a Din Gynfor. Ar ddiwedd y daith awn i Neuadd Pentref Cemaes i weld arddangosfa gan y Gymdeithas Hanesyddol lleol bydd yn dangos mwy o hanes yr ardal nag oedd bosib i Mr Gwilym Jones ddisgrifio yn y 'Pot Pouri.' Awn wedyn i Westy Douglas, Tregele am bryd o fwyd i orffen y dydd. Y gost fydd £13.50 y person. Mae manylion y llwybr a mynediad heb ei sefydlu eto. Byddant yn cael ei dosbarthu i'r rhai fydd yn dychwelyd y ffurflen archebu a fydd gyda cyhoeddiad y Cyfarfod Cyffredinol Blynnyddol.

Trefnwr: Gareth Parry Ffôn: 01248 722697

Saturday 1st July 2006 at 6.30 pm

EVENING EXCURSION

Three Chapels

Mr G Davenport Evans will lead us on visits to three significant chapels in Llanerchymedd and Llangefni. We will meet at Peniel Chapel which is located on the B5111 South of Llanerchymedd some 400 yards down the hill from the converted windmill (Grid Reference: 4268/8351). Parking is available at a lay-by a short distance North of the chapel.

Organiser: Gareth Parry Tel: 01248 722697

Dydd Sadwrn 1 Gorffennaf 2006 am 6.30 o'r gloch

GWIBDAETH GYDA'R NÔS

Tri Capel

Bydd ymweliad min nôs arall dydd Sadwrn, 1 Gorffennaf pan fyddwn yn ymweld a tri capel arwyddocaol yn Llanerchymedd a Llangefni o dan arweiniad Mr G Davenport Evans. Byddwn yn cyfarfod yng nghapel Peniel sydd ar y ffordd B5111 i'r Dde o Llanerchymedd rhyw 400 lath i lawr yr allt ar ôl mynd heibio'r felin wynt cyfnewidiol (Cyfeiriad Grid 4268/8351). Mae lle i barcio dipyn o ffordd i'r Gogledd o'r capel.

Trefnwr: Gareth Parry Ffôn: 01248 722697

Wednesday 16th July 2006

FULL DAY EXCURSION

Sycharth and Oswestry

Our excursion will be to the Oswestry area starting at Sycharth, once the home of Owain Glyndŵr. It was the subject of the November 2005 Society meeting addressed by Mr Spencer Smith. He will meet us at the site and identify features he described in his talk so that we can visualise what it was like before the future King

Dydd Mercher 26 Gorffennaf 2006

GWIBDAETH DIWRNOD LLAWN

Sycharth a Croesoswallt

Mae'r wibdaith diwrnod llawn am fynd i ardal Croesoswallt yn dechrau yn Sycharth, cartref cynnar Owain Glyndŵr a testun araith i'r Gymdeithas yn mis Tachwedd gan Mr Spencer Smith. Fe fydd o yn ein cyfarfod yno ag yn dynodi nodweddion o'r safle a ddisgrifiodd fely cawn ddychmygu sut le oedd yno cyn i'r dyfodol frenin Henry V ei losgi ym mis Mai 1403.

Henry V destroyed it in May 1403. We will then spend time in the border town of Oswestry. A choice of two guided walking tours will be available, each taking between 60 and 90 minutes, looking at either relics of the mediaeval town or the Victorian heritage. The excursion will be limited to 50 persons. A coach will leave Holyhead and pick up at the usual places on its way to Menai Bridge. We will leave there in time to arrive at Sycarth by noon. On the way we have a coffee stop at Faenol Fawr, Bodellwyddan during which you will be asked to choose your evening meal menu there on the way home. Lunch can be taken at one of Oswestry's many eating houses or bring a picnic. We aim to be back in Menai Bridge by 8.00pm. Booking forms will be included with the AGM notice. Organiser: Gareth Parry Tel: 01248 722697

Awn wedyn i dreulio amser yn Croesoswallt. Bydd dewis o ddwy daith arweiniedig ar gael, yn cymeryd rhwng 60 a 90 munud, i weld naill ai gweddillion canoloesol neu y dreftadaeth Victoriaidd. Bydd y wibdaith yn gyfyngedig i 50 person. Bydd y goets yn cychwyn o Gaerbybi ag yn pigo i fyny y mannau arferol er mwyn gadael Porthaethwy mewn amser i gyrraedd Sycarth canol dydd. Byddwn yn galw am banded yn y Faenol Fawr pan y byddwn yn gofyn I chwi ddewis eich pryd gyd'r nôs ar y ffordd adref. Bydd bosib cael cinio canol dydd ar gael yn un o dai bwyta Croesoswallt neu cael picnic. Bwriadwn fod yn ôl ym Mhorthaethwy tua 8 o'r gloch. Bydd ffurflen archebu gyda paourau y Cyfarfod Cyffredinol. Trefnwr: Gareth Parry Ffôn: 01248 722697

Saturday 2nd September 2006 at 1.30 pm

HALF DAY EXCURSION

Breakwater Park

We will meet at the Breakwater workshops in Holyhead (Grid Reference 235836) where parking will be available. "AAS" Signs will point the way from the promenade. Andrew Davidson will lead us to look at some of the features of the Breakwater tramway he described at the 2006 Day School.

Organisers: Andrew Davidson and Gareth Parry Tel: 01248 722697.

Dydd Sadwrn 2 Medi 2006 am 1.30 o'r gloch

GWIBDAETH HANNER DIWRNOD

Parc y Morwal

Bydd y wibdaith olaf prynhawn dydd Sadwrn 2 Medi pan fyddom yn cyfarfod ger gweithdy Morwal Caerbybi (Cyweirnod Grid 235836) am 1.30 o'r gloch ple bydd lle i barcio. Bydd arwydd 'AAS' yn dangos y ffordd o'r promenâd. Bydd Andrew Davidson yn ein arwain i edrych ar rai o nodweddion rheilffordd y Morwal a ddisgrifiodd i Ysgol Undydd 2006.

Trefnwyr: Andrew Davidson a Gareth Parry. Ffôn: 01248 722697

Web Site / Safle Gwe

www.hanesmon.btinternet.co.uk

If you purchase books, videos and electrical goods from Amazon, next time click on the link via our WebSite- the Society benefits.



If any members notice any archaeological sites being defaced or threatened with damage please advise the Hon. Secretary so that the Society can inform the appropriate authorities.

Gofynnir i aelodau tynnu sylw'r Ysgrifennydd Cyffredinol os ydynt yn gweld safleoedd hynafiaethol yn cael ei difetha neu o dan fyggythiad o difrod er mwyn i'r Gymdeithas rhoi gwybod i'r awdurdod au perthnasol.

Hon Sec/ Ysgrifennydd Aelodaeth: Siôn Caffell Tel / Ffôn 01248 752116

Amgueddfai / Museums

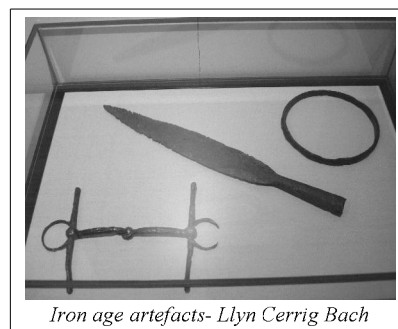
Updated Oriel



Funerary urns

Visitors to Oriel Ynys Môn can expect a pleasant surprise.

Entrance is via an enhanced shopping area leading to a brand new permanent exhibition. First impressions at present would raise the question of what it has to do with Anglesey, because the central section is devoted to a collection of soccer memorabilia! In fact, this is the first showing of what is a temporary exhibition designed to attract a wider clientele. As this centrepiece will change- the next is scheduled to be devoted to Welsh textiles and



Iron age artefacts- Llyn Cerrig Bach

the art of print making- people should be able to come again and again, enjoying something new each time. Surrounding this is a much clearer heritage display, including interactive areas and a Discovery Den. The focus now is on learning through enjoyment, taking part and having fun. It is the result of two years of hard work by Alun Gruffydd and his team. On December 2nd there was a grand opening with invited dignitaries and the Friends of the Oriel. We had the additional pleasure of being addressed by Thomas Telford and 'Twm Chwarae Teg.' Entertainment included delightful dancing by 'Fidl Fadl.' Opening times have been extended to the whole week and entry to the History Gallery is free. Alun hopes that visitors will now spend their money in the new cafe and shop where there is a greater range of crafts and local produce.

Bron i ddau fis ers ail agor Oriel Dreftadaeth y ganolfan, mae Oriel Ynys Môn wedi llwyddo i adfywio diddordeb ei ymwelwyr yn yr elfennau hanesyddol o'r amgueddfa. Mae rhywbeth at ddant pawb yn yr Oriel Dreftadaeth newydd, gyda phwyslais ar fwynhau, cymryd rhan a dysgu drwy brofi a chael hwyl. Dros y misoedd nesaf bydd arddangosfeydd dros dro yn cael eu cynnal yn yr ystafell hon hefyd, gan gynnwys hanes y Wsg Gymreig a hanes y grefft o argraffu printiau. Dros y ddeufis diwethaf hefyd, bydd y rhai ohonoch sydd wedi bod draw wedi sylwi ar newidiadau sylweddol i'r siop a'r dderbynfa. Dyma ymdrech Oriel Ynys Môn i roi mwy o bwyslais ar grefftwaith a chymyrych lleol. Hefyd wrth gwrs, gan fod yr Oriel Hanes bellach ar agor am ddim a phob diwrnod yr wythnos, bydd arian ym mhoced pawb i'w wario yn hytrach yn y siop (yn ogystal â'r caffi) cyn mynd adre!

Holyhead Maritime Museum / Amgueddfa Arfordol Caerbybi



Museum

After the unfortunate loss of a year owing to re-building delays, this Museum is due for re-opening on 21st April, all being well.

It has been enlarged considerably. Familiar exhibits, updated, will be seen in a roomier main hall. Alongside is a restaurant with an external patio extending over the fore-shore. It will be open daily and on summer evenings. The Air Raid Shelter near the main entrance will house all the exhibits of the two World Wars, including shops and a simulation of original shelter conditions. The new extension to the rear will double as a



Air Raid Shelter

1940's school room with modern lecture facilities to give suitable presentations. It should prove an attraction to the present generation of schoolchildren. John Cave, Richard Burnell and their team are to be congratulated for supervising the re-furbishment.

The Editor

Trafodion / Transactions

Members will have noticed that in recent times the dimensions of the latest editions have varied.

For many years the format remained constant. Six years ago it was felt that adopting a larger size would improve the reproduction of the illustrations, and the first larger-format edition was printed in 1999 by the Society's long-standing printer, Gwasg Gee of Denbigh. When Gwasg Gee ceased trading the Transactions were printed in Llangefni at an altered size, with a new cover paper and to a different typographical style. The edition for 2004, now produced by a firm in Llansadwrn, reverted to the general style set by Gwasg Gee in 1999. Its height remained the same but the width is slightly narrower. This format allows for efficient use of paper on modern presses. Some of the intermediate changes before 2004 had proved unpopular, so it is hoped the present format meets with members' approval. It is intended that subsequent editions will retain this style.

Cynhyrchwyd gan / Produced by
Llyfrau MAGMA, Llansadwrn, Ynys Môn

PUBLICATIONS / CYHOEDDIADAU

Llyfrau / Books

Beaumaris- A Pictorial History

John Cowell

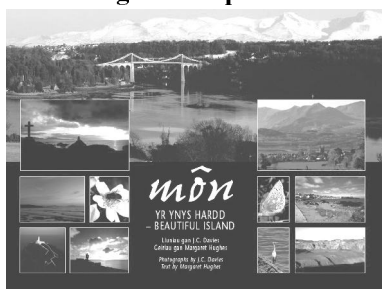
This book is intended for the general reader who has an interest in the social history of the town, particularly during the 19th and 20th centuries.

It deals with the rise of Beaumaris as an elegant seaside resort, social conditions, the extremes of wealth and poverty, health and housing, sport and leisure, education, religion and commercial activities. It concludes with developments during the twentieth century, two world wars and post-war improvements. The book includes seventy full-page black and white and colour illustrations of Beaumaris and Llangoed from an age long since vanished. Each one is accompanied by a detailed caption and vividly recaptures the nostalgia for a way of life vastly different from that of today. The book is available in local bookshops or direct from the author at 52, Lon y Bryn, Menai Bridge LL59 5LL at the published price of £8.95 plus £1.50 postage and packing.

Môn, Yr Ynys Hardd- Beautiful Island

J.C. Davies and Margaret Hughes

On the evening of April 25th at the Ucheldre Centre, Holyhead, there is to be a launch of a wonderful coffee-table book of over one hundred and twenty photographs illustrating John's personal conception of Anglesey.



Professor David Crystal, O.B.E. will introduce the proceedings. J.C. Davies is a well recognised and skilled photographer. This is no chocolate box collection. It is proof of how the camera can capture the right atmosphere in the right hands. Extended

captions to the photographs are by Margaret Hughes. It is bilingual. Attendance is by invitation. There will be a photographic exhibition of the contents at the Ucheldre centre from April 25th until 21st May and all are welcome.

Gwasg Carreg Gwalch

£14.50

A Commodious Yard

Bryan D. Hope

As part of the history of Amlwch this is a fascinating story of one family, William Thomas and Sons.

With the help of living descendants, records of the firm and preserved letters, many quite personal, Bryan has pieced together a tale of enterprise commenced by a self-made man. He started his career by running away to sea in 1834 at the age of

twelve. The hub of his business was 'Iardd Newydd,' now the site of the Maritime and Mining Heritage Centre. There the firm carried out shipbuilding and broking up to the post second world war period. An entertaining read, it is richly illustrated with details of shipping at Amlwch Harbour.

Gwasg Carreg Gwalch

£14.50

Carmarthenshire- The Concise History

Dylan Rees

This is the second in the series 'The Histories of Wales' edited by Catrin Stevens.

Another elegant presentation similar to 'Anglesey.' Serious historians and interested readers will enjoy Dylan's astonishing cover of all aspects of the county history from prehistoric times to the present day. A pleasing feature is the comprehensive set of illustrations including photographs. This book enhances the significance of the series. Readers should look forward to future issues to create a worthy set.

Gwasg Prifysgol Cymru

£9.99

Anglesey Antiquarian Society Publication

Studies in Anglesey Series: Volume 10

Power, Politics and County Government in

Wales: Anglesey 1780-1914.

Dr. W. P. Griffith

This definitive work is to be launched at the Oriel after the Annual General Meeting on 12th May 2006, accompanied by a brief presentation. The Society acknowledges with gratitude the support of Ynys Môn Council. The book will be available at the launch at a lower price than is normal for a tome of this size. It is also on sale at Stone Science and bookshops. By post there is an extra charge of £5.00.

Llyfrau Magma, Llansadwrn, Ynys Môn

£21.00

Crime and Punishment in Beaumaris.

Margaret Hughes

Another gem from Margaret Hughes is available this May. She looks in detail at the early days of punishment and whether it really fitted the crime.

Some of the trials at the Court House and life in the grim prison in Steeple lane are featured, including executions, transportations and floggings. It is a story to feed the imaginations of all who visit the Court House and Gaol and to colour the memories of those who have already visited.

Gwasg Carreg Gwalch

£5.50

Colleagues in Learning

Parys Underground Group (PUG)

This organisation was formed to protect and develop the old mining areas at Parys Mountain near Amlwch in Anglesey.

There is evidence that mining at this site has taken place since the Bronze Age. During the 18th century the copper mine became the largest in the world and the copper extracted was used for products ranging from ships cladding to coins. Access to the underground areas has been made more convenient and secure by members of the group over the last few years. The main entrance is the "Parys Walkway" which dates back to the end of the 19th century, nowadays leading to a series of stone steps extending to the old working levels in the mine. The second level is known as the 15 fathom level where a number of Bronze Age working chambers have been found. Details of these chambers, which have been radio carbon dated to around 3600 years old, are on the PUG web site at www.parysmountain.co.uk

Recently an old concrete dam was discovered holding up millions of gallons of acidic water within the mountain. After consideration by the County Council and the Environmental Agency it was decided to pump this water out. This safeguarded Amlwch and also allowed access to some of the 30 and 45 fathom levels of the mine, flooded for at least 60 years. As the

water in the mountain is so acidic very few metal artefacts remain. Wooden artefacts have been found. These include ladders, wheelbarrows and wooden pump parts. Photographs of these can be seen on the web site. It is possible to gain access to the adjacent Mona copper mine. Both mines were run as separate companies and PUG is currently trying to gain permission to access the Mona mine via known underground links. PUG works closely with Amlwch Industrial Heritage Trust who have recently been successful in obtaining a substantial European grant to study and treat the acidic water which is still running out of the mountain. The Conservation Management Plan for the mines and associated industrial areas in Amlwch port will hopefully attract visitors to this area of the island which tends to be away from the normal tourist route. Together with Anglesey County Council the Trust has also made a £15M bid for funding from the "Living Landscapes" National Lottery Fund to assist in development. The Anglesey Mining Company (AMC) is currently looking to establish areas of the mountain for renewed copper and zinc mining. These regions are well away from the older areas that we are trying to conserve. PUG and AMC help each other and if the mine were re-opened we would be able to show 4000 years of mining history at work.



Neil Summers

To see more pictures, consult Websites www.parysmountain.co.uk and www.copperkingdom.co.uk

Llannon Roundhouses / Tai Crynion / Llannon

Work is now under way in constructing a prehistoric village at the Llannon Mill site.

The project, funded by Cyd Coed through European money is being jointly managed by the Tref Alaw Community Council and the County Council. Tree planting and the construction of two prehistoric roundhouses, a granary and shelters will be completed by Autumn 2006. Already, Anglesey schoolchildren are being brought in to learn about the prehistoric building techniques, prehistoric cooking and will be involved in the scheme as the work develops. It is hoped that a "Friends of Llannon" group will be established which will support the project and the Llannon Mill site as a whole. There is also scope to involve adult volunteers as part of the building work, so if you would like to be involved, please contact Alun Gruffydd at Oriel Ynys Môn Tel- 01248 752009.

Bellach mae'r gwaith wedi cychwyn ar adeiladu pentref Bcynhanesyddol ar safle Melin Llannon.

Cyllidwyd y prosiect gan Cyd Coed drwy ffynhonnell arian Ewropeaidd a rheolir y cynllun ar y cyd rhwng Cyngor Cymuned Tref Alaw a'r Cyngor Sir. Bydd y gwaith o blannu coed, adeiladu 2 dy crwn, storfa rawn a chysgodleoedd wedi ei gwblhau erbyn yr Hydref 2006. Yn barod, mae plant ysgol Ynys Môn wedi bod yn rhan o'r fenter gan ddysgu am y dulliau o adeiladu pentref o'r fath, sut i goginio yn yr oes a fu a dysgu am bethau eraill hefyd wrth i'r cynllun ddatblygu. Y gobaith yw y bydd "Cyfeillion Llannon" yn cael ei sefydlu yn fuan i gefnogi'r prosiect ac i hyrwyddo gwaith safle Melin Llannon yn ei gyfarwydd. Mae yma gyfle hefyd i groesawu oedolion fel gwirfoddolwyr fel rhan o'r gwaith adeiladu, felly os hoffech fod yn rhan o'r fenter cysylltwch ag Alun Gruffydd yn Oriel Ynys Môn - 01248 752009.

Ble mae'r Tocyn Aelodaeth?

After popular request a smaller version of the old Membership Card will be re-issued.

Its purpose is to be a handy reference for dates and will contain all details of meetings, excursions, lecturers and times. It should assist those who may forget when an event is imminent! Details will also appear in the Newsletter.

Meetings / Cyfarfodau

12th May - Annual General Meeting - Oriel Ynys Môn- 7 pm

Dr W. P. Griffith.

15 th September - Stone Science Lecture	()	Lecturers	()
17 th September - Stone Science Lecture	()	to be	()
20 th October - Oriel Ynys Môn Lecture	()	confirmed	()

Anne's Accessions

New Documents in the Record Office

1. Bishop's transcripts, Amlwch, Llandysilio, Penrhosllugwy and Rhosybol, WPE
 2. Papers of the PAWB and anti nuclear campaigner, Megan Mon Prytherch, 1982-1990, WM 2112
 3. Log books of Ysgol Kingsland, 1950-1983, WA/8/161-162
 4. Photocopy of Rhosymynach tithe map and apportionment, c.1848, W tithe maps
 5. Cofnodion Merched y Wawr, Penysarn, 1983-2005, WM 1823/43-45
 6. Report of a survey of the conditions of rural industries on Anglesey by TO Williams, 1943, WM 2118
 7. Cofnodion Capel Hyfrydle, Caergybi, 1887-1939, WD/11
 8. Pencraig estate deeds, 1699-1874, WD/12
 9. Records of the managers of Amlwch Port Council School, 1909-1961, WA/12/33-35
 10. Cofnodion Eglwys Ebeneser, Kingsland, Caergybi, 1876-1974, WD/13
 11. Records of Red Wharf Bay Sailing Club, 1952-2003, WD/14
 12. Facsimile of a sketch map of works and havens at Amlwch, mid 16th cent., and map of the ochre pits at Parys Mountain, 1837-1853, W Maps/145-146
 13. Additional records of the Anglesey Federation of Women's Institutes and Bryn du, Llanddeusant and Llantrisant, Rhosneigr, and Valley Institutes, 1946-2003, WD/3/718-766
 14. Papurau y Parch. Thomas Arthur Jones a Cynghorydd Agnes Arthur Jones, gynt o Mona Lodge, Amlwch, [c.1895] - 1979
 15. Cofnodion Capel Carmel, Porth Amlwch, annibynwyr, 1862-2002, WD/16
 16. Cofnodion Capel Disgwylfa (MC), Caergybi, 1837-2001, WD/17
- Additional records of Dwr Cymru/Welsh Water relating to Anglesey, 1921-1995, WDAK/93-121
- There is an opportunity to meet Anne Venables in your local library and enquire about information available in the Anglesey Record Office which could help in your family, house or local history search.

Meetings are by appointment.

Amlwch - Thursday 27 April, 2-5

Baumaris- Thursday May 8, 4-7 and Wednesday 17 May, 10-1

Benllech-Tuesday June 13, 2-7

Cemaes-Monday June 19, 2-6

Rhosneigr-Monday June 26, 4-7 and Wednesday July 5, 2-4.30

Moelfre-Monday July 10, 2-5

Newborough-Friday July 21, 2-4

Llangefni- July 27, 2-4

Anne Venables. Tel. 01248 75208 Record Office, Llangefni

Hands across the Celtic Sea

Two significant similar events occurred recently. March 11th/12th saw a programme of Archaeological and cultural presentations by contributors from Ynys Môn and Dalkey. This was at Tre-Ysgawen Hall and was a great success. Historical subjects included the early church in Ireland and the Holyhead, Howth and Dun Laoghaire Harbours. Celtic, (Welsh and Irish) literature and poetry featured with talks on the language differences. On March 24th/25th a Maritime History and Archaeological Seminar was held at Boston Centre Stage, Holyhead. Again there were contributors from Dalkey and from prominent divers of Ireland and the UK describing important wrecks on both sides of the Irish Sea.

Golygyddol / Editorial

This is more a brief comment rather than an Editorial. It has been a busy six months.

This edition is full of reports with little room for anything else! As always I hope you find it enjoyable. Do support the Excursions and Meetings. May I remind all members of the vacancies for the post of Editor for the Transactions. More urgently, I invite nominations for the post of Honorary Secretary. Please contact me or Siôn Caffell.



The next edition of the Newsletter will be published in the autumn of 2006.

Please forward any articles to the Editor:

Dr. J. Ken Roberts, Cae Paradwys, 16, The Rise, Trearddur Bay, Holyhead Tel. 01407 861036